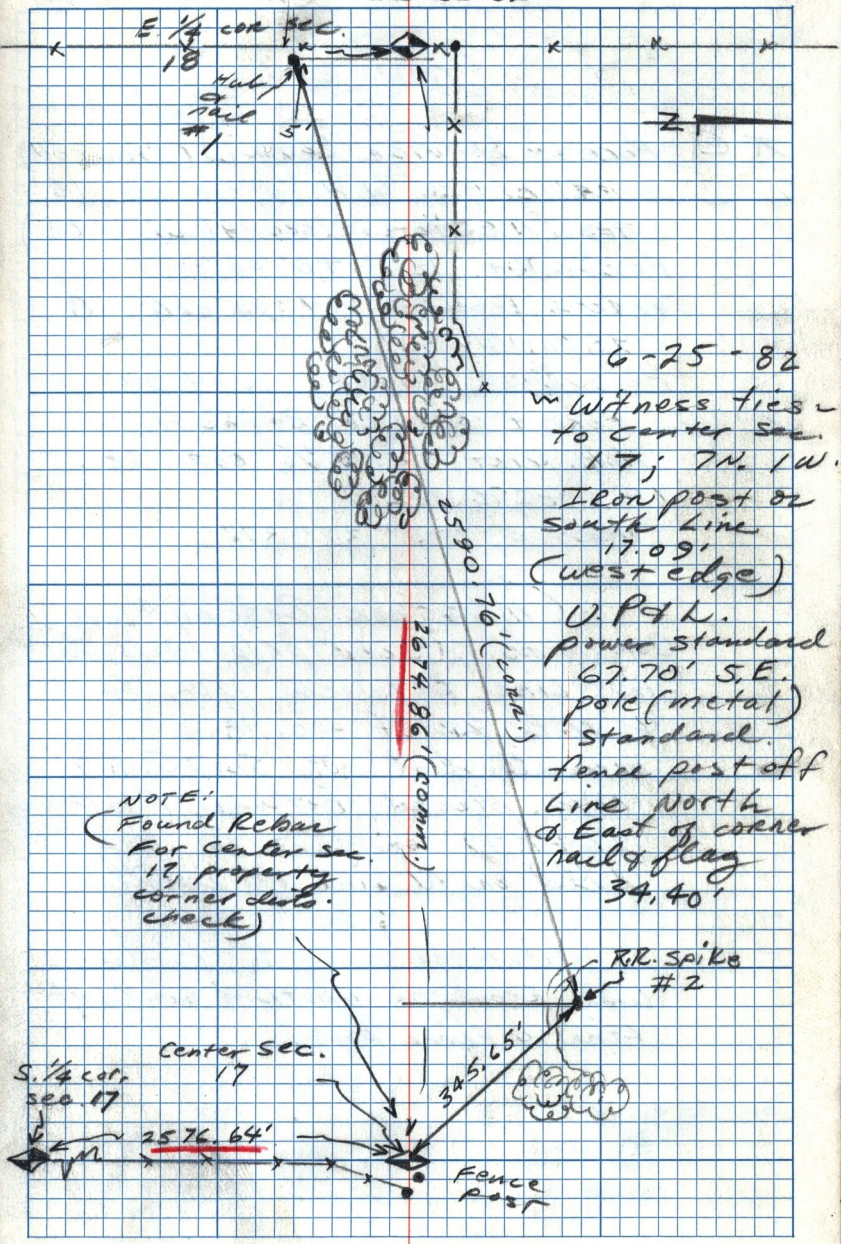


T7N. R1W. B. Hillier  
 MC-52 M. Holmes  
 June 25 '82



6-25-82  
 W Witness ties  
 to Center sec.  
 17; 7N. 1W.  
 Iron post on  
 South Line  
 17.09'  
 (west edge)  
 U.P.R.  
 power standard  
 67.70' S.E.  
 pole (metal)  
 standard.  
 fence post off  
 Line North  
 & East of corner  
 nail & flag  
 34.40'

NOTE:  
 Found Rebar  
 For Center sec.  
 17, property  
 corner data.  
 check)